



TRIPROOF SERIES LED-FE | 17-35W

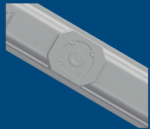


Lock-in place side clip design



Side clips can be locked into position away from the diffuser

Thoughtful design



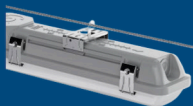
BESA-complaint backplated design

Dual-ring cable entry



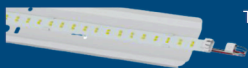
Dual-ring cable entry (20mm & 25mm diameter)

Multiple installation methods



Flexibly adapts to various installation requirement

Replaceable light source



The LED light source board can be replaced and upgraded, improving the lamp's utilization rate and offering better cost performance

Features :

- IP66 anti-corrosive batten, PC diffuser, PC base, SS clips
- Side clips can be locked, gear tray integrated with diffuser, easy for installation
- CCT & Wattage selectable
- BESA box compatibles
- Tool-less access to control gear
- Plug and play emergency and microwave sensor pack available
- 2ft/4ft/5ft/6ft options
- High efficiency up to 180lm/w





Specification

Parameter				
Model	Power	lm/w	Input voltage	CCT
LED-FE-1/60CCT1	10W	130/150	220-240V	3000/4000/5700K
LED-FE-1/60CCT1	17W	130/150	220-240V	3000/4000/5700K
LED-FE-1/60CCT3	18/15/12/9W	140/160/180	220-240V	3000/4000/5700K
LED-FE-1/120CCT1	20W	130/150	220-240V	3000/4000/5700K
LED-FE-1/120CCT1	40W	130/150	220-240V	3000/4000/5700K
LED-FE-1/120CCT3	18/15/12/9W	140/160/180	220-240V	3000/4000/5700K
LED-FE-1/120CCT3	36/30/24/18W	140/160/180	220-240V	3000/4000/5700K
LED-FE-1/150CCT1	26W	130/150	220-240V	3000/4000/5700K
LED-FE-1/150CCT1	52W	130/150	220-240V	3000/4000/5700K
LED-FE-1/150CCT3	28/24/20/16W	140/160/180	220-240V	3000/4000/5700K
LED-FE-1/150CCT3	56/48/40/32W	140/160/180	220-240V	3000/4000/5700K
LED-FE-1/180CCT1	30W	130/150	220-240V	3000/4000/5700K
LED-FE-1/180CCT1	60W	130/150	220-240V	3000/4000/5700K
LED-FE-1/180CCT3	30/25/20/15W	140/160/180	220-240V	3000/4000/5700K
LED-FE-1/180CCT3	60/50/40/30W	140/160/180	220-240V	3000/4000/5700K

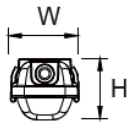
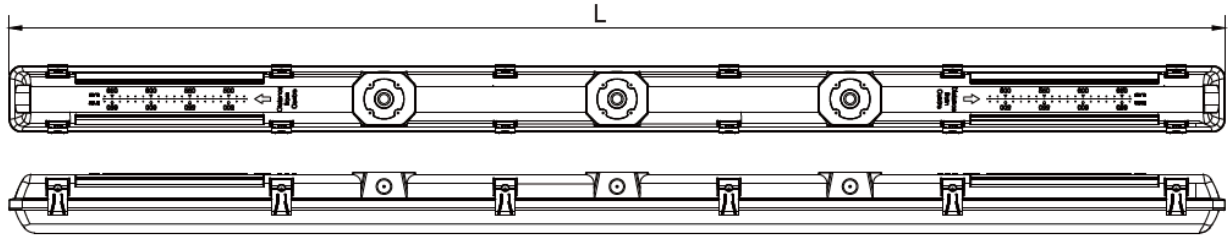
Material	
Beam angle	120°
LED type	SMD 2835
Material	Steel Body/PC Cover
Color option	White
Installation	Surface Mounted / Suspension

Parameter	
CRI	>80/90
PF	>0.95
IP	66
IK	10
Lifespan	50000h

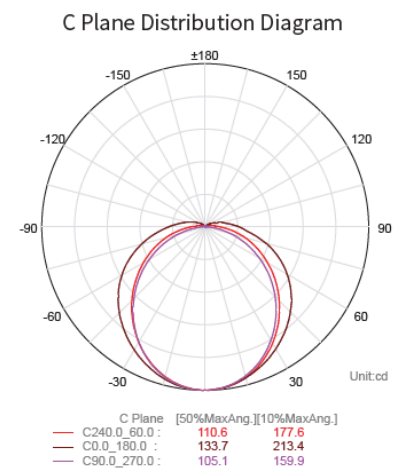
Package			
Model	Product Dimension	PCS/Carton	Carton Size
LED-FE-1/60	653x90x79mm	12	695x300x360mm
LED-FE-1/120	1263x90x79mm	9	1295x300x275mm
LED-FE-1/150	1563x90x79mm	9	1595x300x275mm
LED-FE-1/180	1830x90x79mm	6	1895x300x190mm



(Unit:mm)



Function	
Microwave	
Auto-Dimmable	15%-100%
Sensor Distance	Height 3m (6m Max)



Accessories

Stainless steel



Anchor



ST4*30mm Screw



ST3*4mm Screw



Illuminance-Distance Curve

